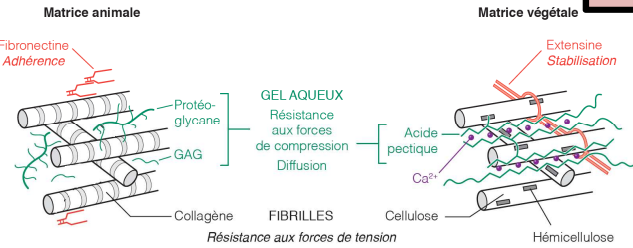
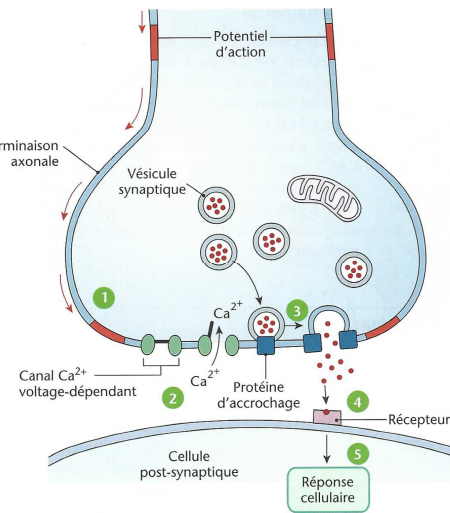
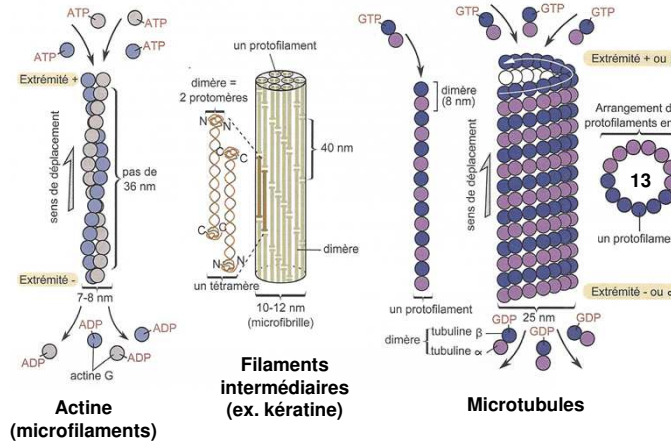
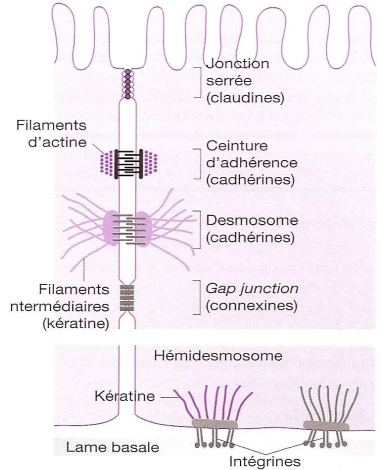


**Composition et organisation d'une membrane : LE PLASMALEMME**

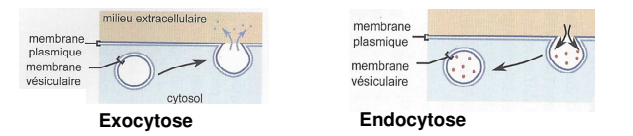
**Principales fonctions :**  
 - Maintien de la forme des cellules.  
 - Maintien de la **cohésion des tissus** grâce à des liens étroits avec les **jonctions intercellulaires** et la **matrice extracellulaire**.  
 - **Motilité de la cellule**.  
 - **Transport vésiculaire / endocytose / exocytose**.  
 - Intervention dans les **divisions cellulaires** (mitose, méiose).



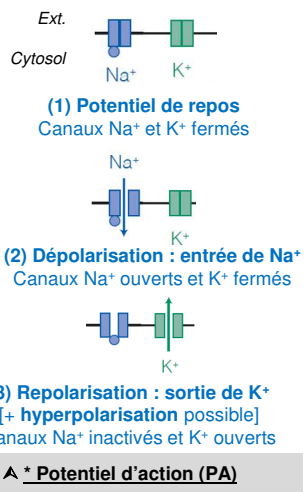
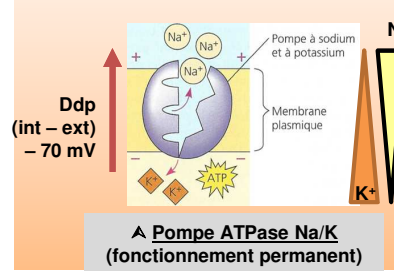
**Les matrices extracellulaires**



**Les principales jonctions animales**

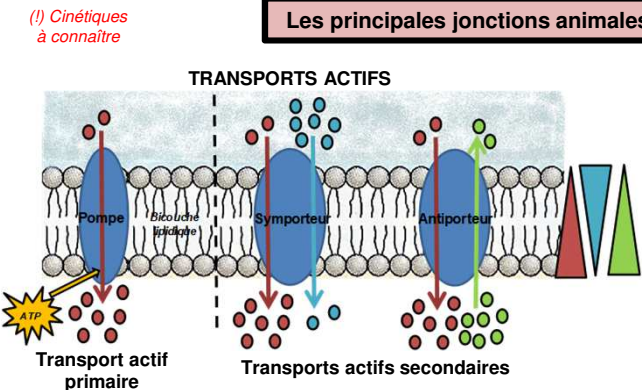
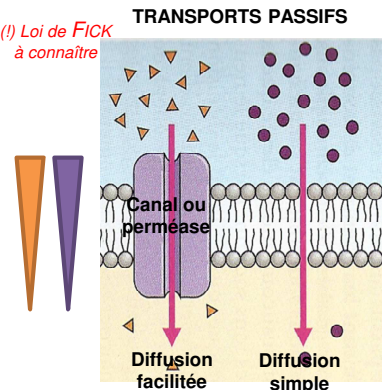
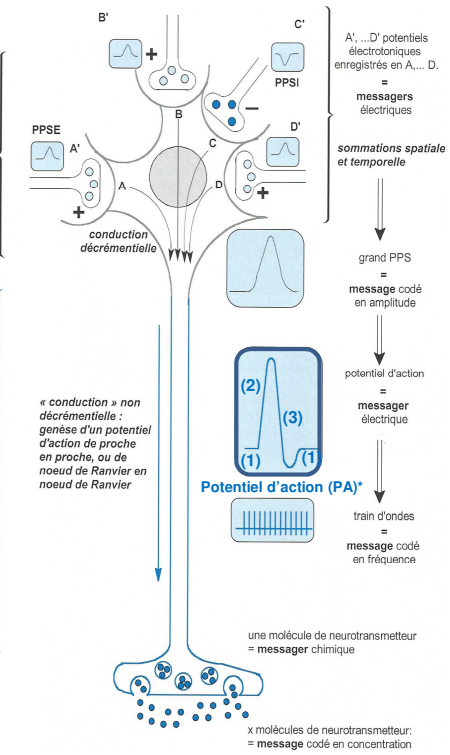


**Les cytoses**



**Le neurone : relations structure-fonction**

**Principes de la neurotransmission**



**Les échanges transmembranaires [osmose non représentée]**

Diffusion simple  
 Diffusion facilitée (par aquaporines)