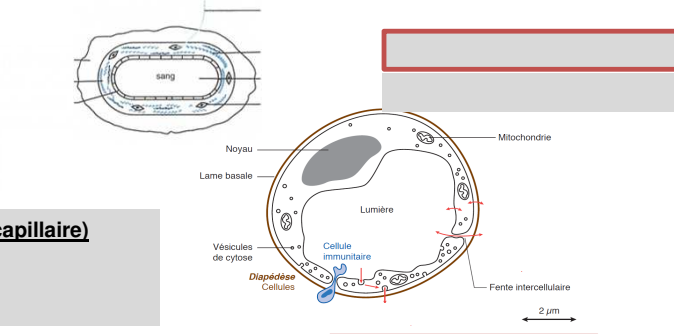
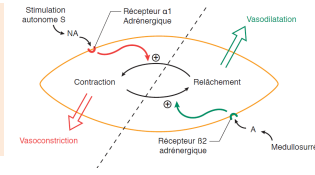
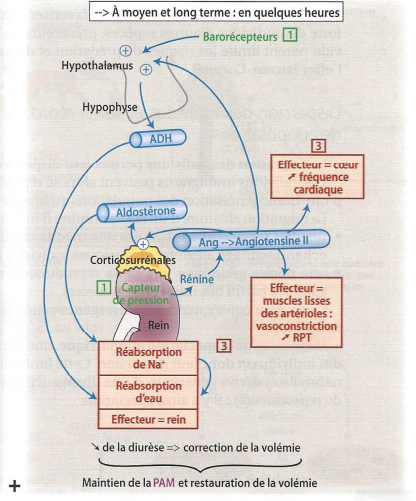
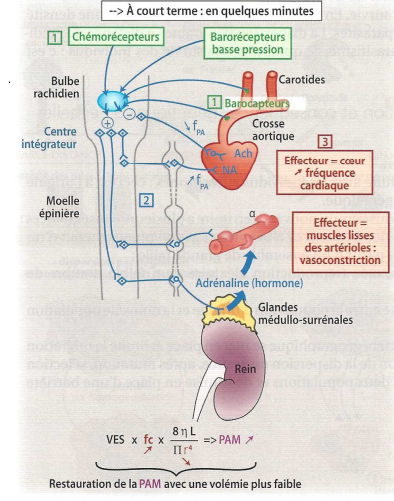
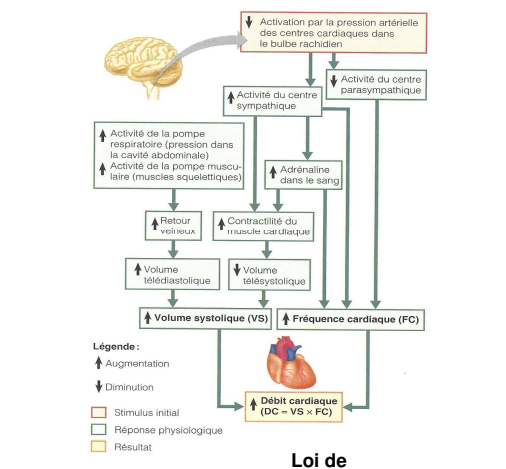
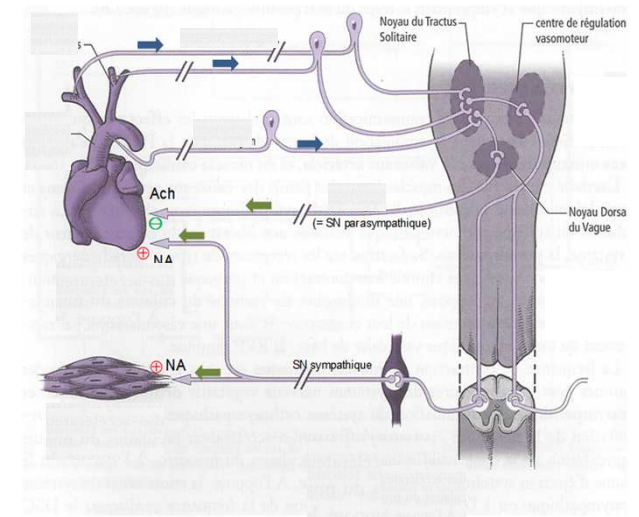
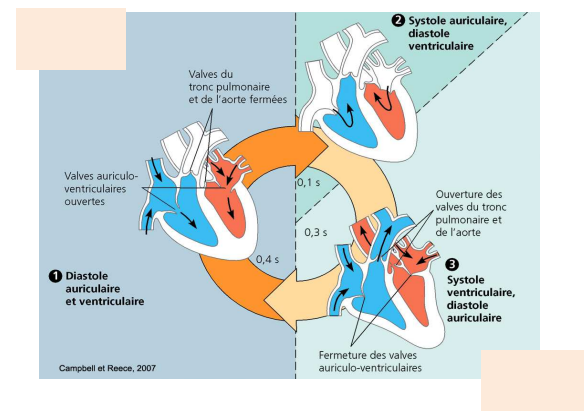
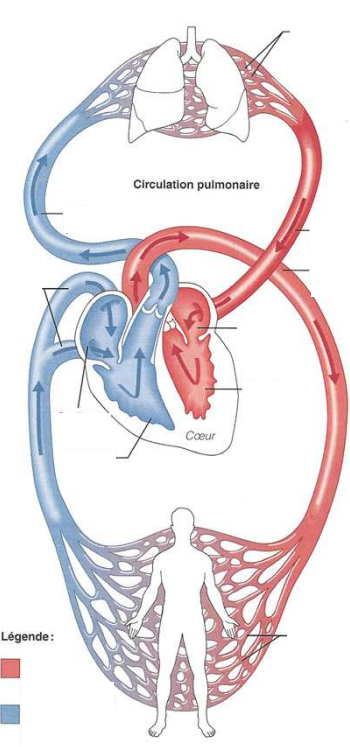


**\* Contrôle de la vasomotricité :**



**Paroi des vaisseaux (sauf capillaire)**



**Loi de POISEUILLE**

**CPGE TB V. Labbé. SVT Chapitre 10. La circulation chez les Mammifères. Schéma de synthèse.**

© T. JEAN (janvier 2019) - <https://www.svt-tanguy-jean.com/>

Figures : PEYCRU *et al.* (2013), SEGARRA *et al.* (2014), CAMPBELL & REECE (2004), MARIEB (2005), RICHARD *et al.* (2015), SAINTPIERRE *et al.* (2017)